



Beaufort County Public Works Stormwater Infrastructure Project Summary

Project Summary: Ladys Island Vacuum Truck - Marsh Drive, Dog Creek Road, Central Drive and Palmetto Business Park

Activity: Routine/Preventive Maintenance

Narrative Description of Project:

Cleaned out (8) catch basins. Jetted (2) crossline pipes and 32 L.F. of outfall pipe.

Completion: May-13

2013-307A / Ladys Island Vacuum Truck	Labor Hours	Labor Cost	Equipment Cost	Material Cost	Contractor Cost	Indirect Labor	Total Cost
AUDIT / Audit Project	0.5	\$10.45	\$0.00	\$0.00	\$0.00	\$6.62	\$17.06
CBCO / Catch basin - clean out	24.0	\$566.76	\$265.92	\$112.50	\$0.00	\$389.64	\$1,334.82
CLPJT / Crossline Pipe - Jetted	19.0	\$448.82	\$221.60	\$78.50	\$0.00	\$308.70	\$1,057.62
2013-307A / Ladys Island Vacuum Truck Sub Total	43.5	\$1,026.03	\$487.52	\$191.00	\$0.00	\$704.96	\$2,409.50
Grand Total	43.5	\$1,026.03	\$487.52	\$191.00	\$0.00	\$704.96	\$2,409.50

Before



During



After



Project: Central Drive

Activity: Vacuum Truck

Project #: 2013-307A

Township: Lady's Island

Completed: May 2013

Legend

TYPE	
	River
	Creek/Stream
	River/Creek/Marsh BANK
	Channel (fka Outfall)
	Channel Pipe
	Lateral
	Lateral Pipe
	Roadside
	Roadside Pipe
	Road Pipe
	Road Pipe
	Crossline Pipe
	Driveway Pipe
	Access Pipe
	Bleeder Pipe
	Parcels

Jetted 32 LF of channel pipe.

Jetted (1) crossline pipe.

W RIVER DR



1 inch = 65 feet

**Project: Dog
Creek Road**

**Activity: Vacuum
Truck**

**Project #:
2013-307A**

**Township: Lady's
Island**

**Completed:
May 2013**

Legend	
TYPE	
	River
	Creek/Stream
	River/Creek/Marsh BANK
	Channel (fka Outfall)
	Channel Pipe
	Lateral
	Lateral Pipe
	Roadside
	Roadside Pipe
	Road Pipe
	Crossline Pipe
	Driveway Pipe
	Access Pipe
	Bleeder Pipe
	Parcels

Jetted (1) crossline pipe.

DOG CREEK RD

RELATIVE LN

FRIENDSHIP LN



1 inch = 133 feet

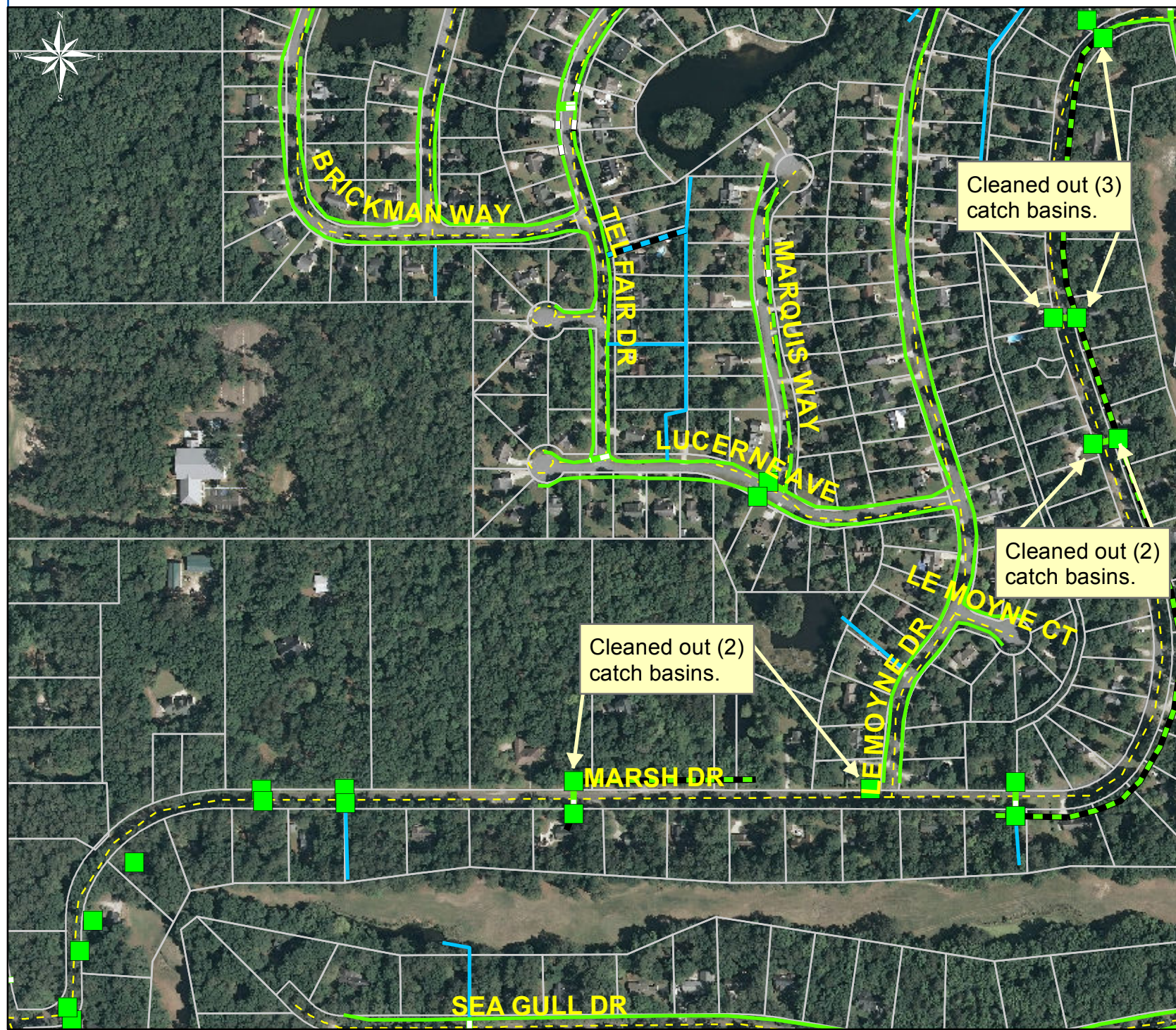
Project: Marsh Drive

Activity: Vacuum Truck

Project #: 2013-307A

Township: Lady's Island

Completed: May 2013



Legend	
TYPE	
	River
	Creek/Stream
	River/Creek/Marsh BANK
	Channel (fka Outfall)
	Channel Pipe
	Lateral
	Lateral Pipe
	Roadside
	Roadside Pipe
	Road Pipe
	Crossline Pipe
	Driveway Pipe
	Access Pipe
	Bleeder Pipe
	Parcels



1 inch = 365 feet

Prepared By: BC Stormwater Management Utility
Date Print: 7/16/13
File: C:/sethdata/projects/projectmaps/Vac/Marsh Dr 2013-307A

Project: Palmetto Business Park

Activity: Vacuum Truck












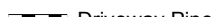



Project #: 2013-307A

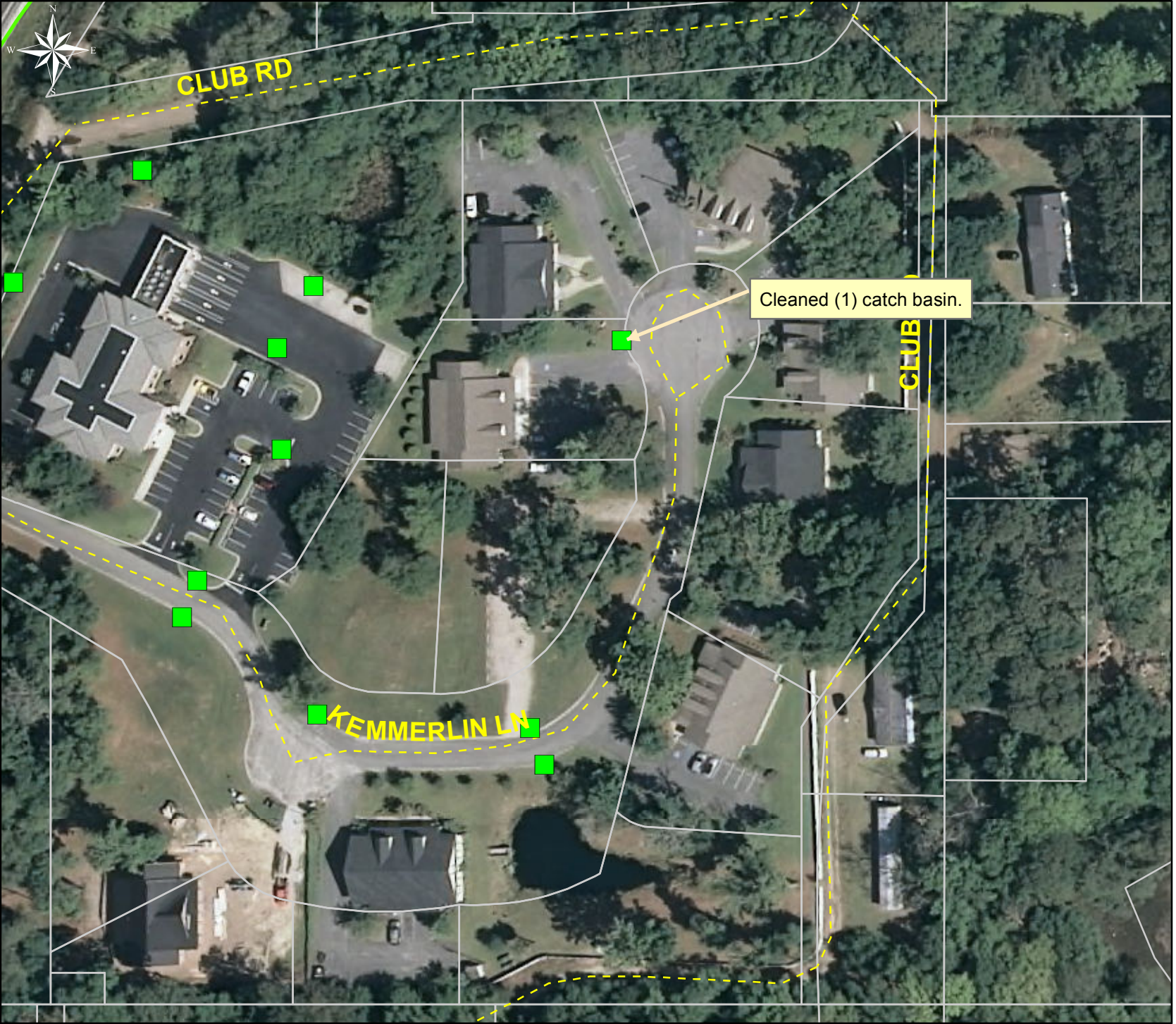
Township: Lady's Island

Completed: May 2013

Legend

TYPE

-  River
-  Creek/Stream
-  River/Creek/Marsh BANK
-  Channel (fka Outfall)
-  Channel Pipe
-  Lateral
-  Lateral Pipe
-  Roadside
-  Roadside Pipe
-  Road Pipe
-  Crossline Pipe
-  Driveway Pipe
-  Access Pipe
-  Bleeder Pipe
-  Parcels



Cleaned (1) catch basin.



1 inch = 100 feet